

**Early Bird Signup Discount: \$750  
savings before September 15, 2024**

# Gorillas in the Rift

**An Adventure in Uganda**

Entebbe • Murchison Falls • Kibale National Park • Queen Elizabeth National Park • Bwindi Impenetrable Forest

**May 11–21, 2025**



Dear DU Alumni, Family and Friends,

Join fellow Alumni in this once-in-a-lifetime trip to see the last remaining apes in Uganda, affectionately called the “Pearl of Africa” by Winston Churchill. Just over 1,000 mountain gorillas still make their home in the primeval forests of central Africa. This trip enables you to intimately experience these animals and other primates in their natural habitat, while learning first-hand about the history and cultural heritage of this fascinating country.

After a very successful trip to Kenya in 2023, we want to offer Uganda in 2024 to continue the theme of wildlife and conservation.

Your journey will begin in **Entebbe**- a small town on the shores of Lake Victoria and in close proximity to the vibrant Ugandan capital of Kampala. Built on seven hills, it is the gateway to the interior. Traveling to **Murchison Falls National Park** will bring to the site where “The African Queen” was filmed featuring the famous Humphrey Bogart. The Victoria Nile bisects this park and finally squeezes through an 8-meter (26.2 feet) gorge that forms the falls. Here you will get a taste of the East African wild life and a haven for bird watchers. In **Kibale Forest** — one of the loveliest and varied tracts of tropical forest in Uganda — you will come face to face with 13 species of primates including chimpanzees. Not for the faint-hearted, this is an adrenaline rush listening for their screeching chatter as they search for fruit and berries.

Traverse past Africa’s third highest mountain- the Rwenzoris – or *Mountains of the Moon* and World Heritage site to **Queen Elizabeth National Park**. Named after the reigning British monarch, it is one of the most popular parks in Uganda and the place to see the famous tree-climbing lions.

Our final stop will be to the world-famous **Bwindi Impenetrable Forest** for the ultimate gorilla tracking experience. The mist-covered hills of the park is home to about 450 mountain gorillas - roughly half of the world’s population. It is a thrilling experience to trek for several hours in search of their nests and come face to face with our closest non-human relative.

For those who wish to continue with your wildlife adventure, an optional safari has been arranged to Kenya’s Masai Mara or additional gorilla trekking in Rwanda. Please find the details below or contact Immersion Journeys to customize a pre or post trip.

Space is limited guests and we encourage you to reserve today or by returning the enclosed reservation form. You can also reserve your spot [online](#).

Warm regards,

A handwritten signature in black ink that reads "Sarah Doody".

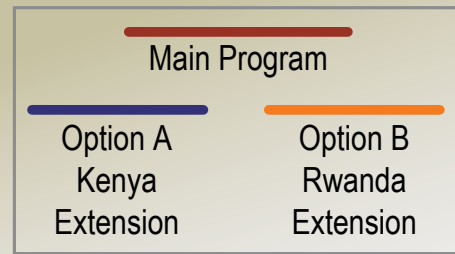
Sarah Doody  
Coordinator, Pioneer Journeys Travel Program

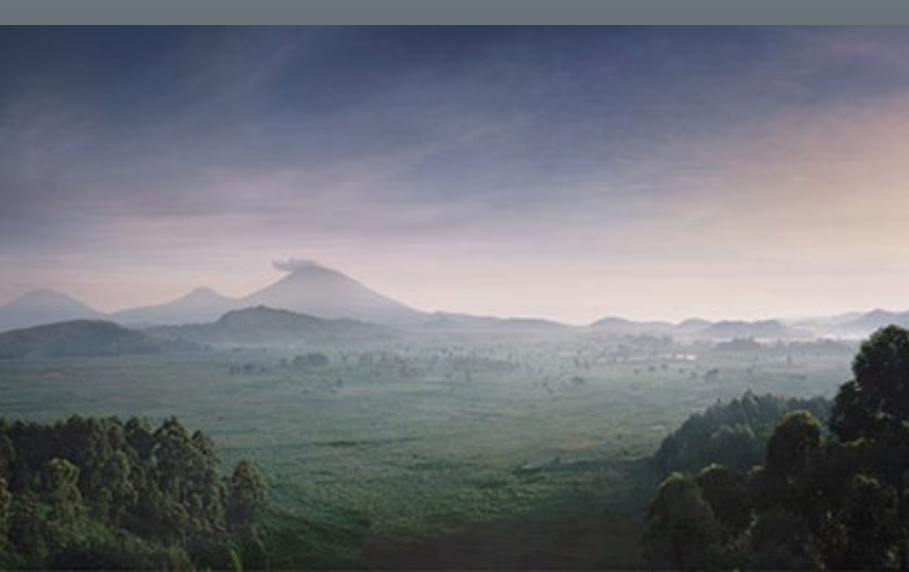
*For more information about this tour, contact Immersion Journeys at (917) 686-2620 or email [info@immersionjourneys.com](mailto:info@immersionjourneys.com).*

## TOUR HIGHLIGHTS

- Come face to face with endangered mountain gorillas in Bwindi Impenetrable Forest and trek chimpanzees in Kibale National Park. Learn about the strides being made in great ape and primate conservation in Uganda.
- View a variety of animal and bird species in Murchison Falls and Queen Elizabeth National Park including the famous tree-climbing lions.
- Get immersed in the local culture, music and dance of Uganda.

**Activity Level** *(varies from moderate to hard depending on the location of the gorillas): chimpanzee and gorilla trekking is often strenuous and requires walking on muddy and uneven paths and requires climbing short but sometimes moderately challenging terrain depending on the location of the gorilla nest. It is important to know and understand your level of stamina, and be comfortable in your abilities for such an activity. While park rangers and porters are available for assistance and support, guests are expected to be able to walk on their own with minimal assistance. Please consult with your doctor to evaluate your physical condition.*





# PROGRAM ITINERARY

## **May 11, 2025 — U.S. | Entebbe, Uganda**

Depart the U.S. for Entebbe (flights not included)

\*This is a recommended departure date. Should you wish to arrive early, please contact Immersion Journeys. The cost for the early arrival hotel is \$285 per night inclusive of breakfast and taxes.

## **May 12 — Arrival Entebbe**

Met on arrival and transferred to the hotel for rest and relaxation prior to meeting the group at an evening cocktail reception.

*Overnight: [Protea Hotel](#) (Cocktail Reception)*

## **May 13 — Entebbe /Murchison Falls National Park**

Depart north-west for Murchison Falls National Park with a brief stop at the Ziwa Rhino Sanctuary. This sanctuary was created to re-introduce rhino to Uganda after they were almost wiped out. Later arrive at your lodge located along the riverbank on the northeastern edge of the park. This park is where the world's longest river – the Nile passes through a narrow gorge forming the thunderous falls and is also home to a diversity of wildlife including the Big 5.

*Overnight: [Paraa Safari Lodge](#) (B, L, D)*

## **May 14 — Murchison Falls National Park**

Early morning game drive to the delta circuit where there's a possibility of spotting the elusive leopard, Jackson's hartebeest, large concentrations of Uganda kobs and large families of the defassa waterbuck, together with giraffe herds, groups of the dainty oribi and buffalo.

Afternoon boat safari on the calm Victoria Nile and the base of the falls just meters from the "Devil's Cauldron." You have an option to take a guided hike to the top of the Murchison Falls and from this vantage point will have an opportunity to see the Nile's beauty perfected as you watch the water forced through a seven meter cleft in the rocks and plunge 45 meters below forming a spectacular rainbow and adrenaline rush.

*Overnight: [Paraa Safari Lodge](#) (B, L, D)*



### **May 15 — Murchison Falls | Kibale Forest National Park**

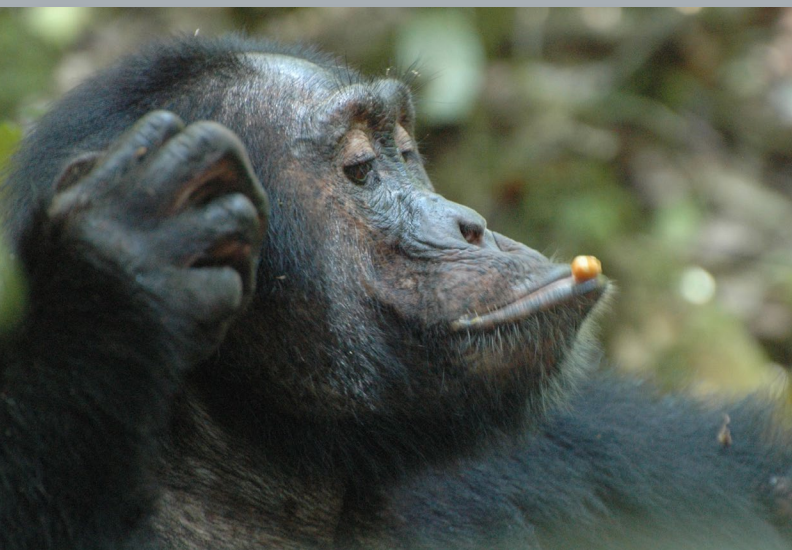
Travel to Kibale Forest National Park. The drive will go past the verdant countryside and traditional homesteads and farms including the fabled "Mountains of the Moon. Kibale is one of the most varied tracts of tropical forest and home to 70 mammal species, 375 species of birds and 13 species of primates including the chimpanzee.

*Overnight: [Ndali Lodge](#) (B,L,D)*

### **May 16 — Chimpanzee Tracking in Kibale Forest National Park**

Chimpanzee tracking starts early in the morning. Besides learning about the primates, your guide will provide detailed explanations on the fauna and flora ensuring that the walk is both informative and enjoyable.

*Overnight: [Ndali Lodge](#) (B,L,D)*



### **May 17 — Kibale | Queen Elizabeth National Park.**

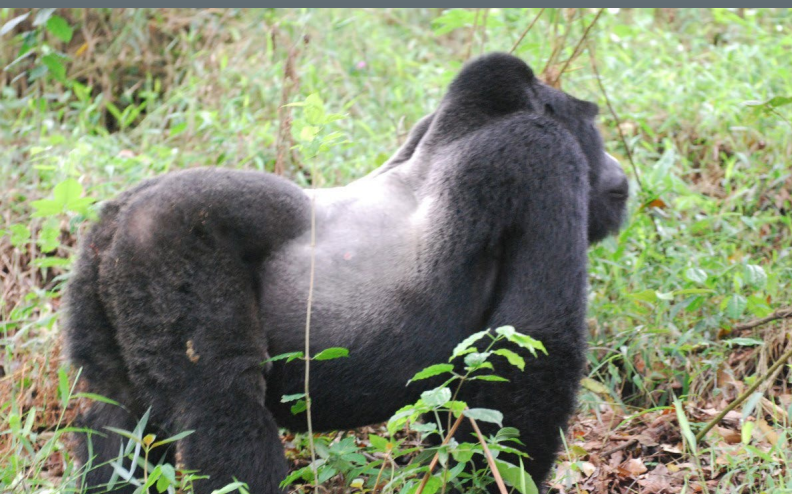
Start for Queen Elizabeth National Park, following the mystical Rwenzori Mountain range along the way. Upon arrival at the park you may be rewarded with view of waterbucks, elephants, leopards, buffaloes, hyenas and a variety of antelope species. Time and interest permitting, visit the Katwe explosion craters. This is highest point of Queen Elizabeth National park at 1,350 meters above sea level. Walk down to the salt lakes to meet the locals who earn a living from salt mining. You will get to learn about salt formation process from the saline waters during the hot season. The creative and hardworking miners will share their experiences of mining and local salt processing.

*Overnight: [Mweya Safari Lodge](#) (B, L, D)*

### **May 18 — Predator Research Excursion | Queen Elizabeth National Park**

Depart at dawn in search of lions. Your guides on this exclusive adventure are members of a local predator research team that has been doing carnivore research for years. Learn to use telemetry to find the different lion prides who roam the savanna. There is no better way to find and photograph lions and other big game in Uganda. During the drive, the guides and researchers will discuss human-animal conflict in communities around the park, veterinary issues within the park, and lion family dynamics as part of a very in-depth game drive.

Afternoon boat cruise on the Kazinga Channel. This trip passes through high concentrations of hippos and a wide variety of animals may be seen at the water's edge. This cruise offers an excellent platform for photography, bird watching and game viewing. The prolific bird life is colorful and stupendous with well over six hundred recorded species having been spotted. *Overnight: [Mweya Safari Lodge](#) (B, L, D)*



## **May 19 — Queen Elizabeth National Park | Bwindi Impenetrable Forest**

Depart for Bwindi Impenetrable Forest, home to roughly half of the world's mountain gorillas. Take a village walk around the Buhoma area and learn about their way of life and local customs.

*Overnight: [Mahogany Springs Lodge](#) (B, L, D)*

## **May 20 — Gorilla Tracking in Bwindi Impenetrable Forest**

Early morning start for your gorilla trek. The rainforest is spectacular, heavily vegetated and dense landscape crisscrossed by numerous animal trails allowing access for trekkers. This park is best known for the fascinating gorillas. The thrill of spending time with them and observing these gentle giants is a rare and moving adventure that will leave you with long lasting memories of a truly unique experience. The gorillas are shy and peaceful animals and it is an unforgettable experience to watch them as they interact with each other.

*Overnight: [Mahogany Springs Lodge](#) (B, L, D)*

## **May 21 — Fly to Entebbe | Depart for home or Extension**

Fly to Entebbe airport arriving in the late morning. Day rooms (available until 6 p.m.) have been arranged for those with late afternoon or evening flights. For those who are up for additional adventure, continue to Kenya or Rwanda (see details on the next page).





## TOUR PRICE

**Early signup discount before September 15, 2024: \$11,195 per person (double occupancy). \$1,350 single room supplement (extremely limited and on first come basis)**

**After September 15, 2024: \$11,945 per person (double occupancy). \$1,350 single**

### Includes:

- All airport meet and greet + transfers.
- All accommodations as indicated above.
- Welcome cocktails and hors oeuvres, 9 breakfasts, 8 lunches, 8 dinners.
- 1 soft drink per guest during lunches and 2 glasses of house wine, local beer or soft drink per guest during dinners.
- Gorilla and chimpanzee trekking permit (one trek per activity type).
- All national park fees, conservation levy, taxes.
- All safari game drives in 4x4 vehicles with professional English-speaking guides.
- Exclusive access and predator tracking with a local research team.
- Boat cruise at Murchison Falls and Kazinga Channel.
- Bush flight from Bwindi to Entebbe.

### Exclusions:

Tips and gratuities to guides, rangers, hotel/ lodge luggage porters, hotel staff, boat crew during cruises, international airfare into/ out of Entebbe (unless traveling on the Kenya extension), visas and passport fees, vaccinations (unless medically waived, proof yellow fever vaccination is required to enter Uganda and when traveling between the East African zone countries), pre-arrival COVID testing (if not fully vaccinated. Fully-vaccinated guests must show proof), laundry, beverages other than those mentioned in the inclusions, telephone, fax and internet, **Mandatory** travel insurance\* including air evacuation to your home country/ state/ city. \*Guests should have enough coverage for additional in-country COVID testing and any necessary hospitalization/ treatment/ isolation/ transport.

## OPTIONAL EXTENSIONS

### OPTION A: 3-night Kenya Sojourn, May 21-24, 2025

*This extension is a wonderful complement to your primate experience in Uganda. The Masai Mara eco-system is teeming with wildlife across the savanna plains.*

**\$3,395 (per person, double occupancy)**

**\$745 single supplement (extremely limited)**

- Above includes flights to/from Masai Mara, 3 nights at luxury lodge/ camp (full board basis) all domestic flights, airport meet/ greet, accommodations and meal plan as mentioned above, all conservancy and park fees, safari game viewing with professional Guide.
- Does not include: Kenya visas, gratuities, extra services, extra meals, beverages, yellow fever vaccination (proof required for those traveling from Uganda). Other customized pre/post trip extensions are available.

### OPTION B: 2-night Gorilla Trek in Rwanda, May 21-23, 2025

*Continue your gorilla trekking experience in Rwanda's Volcanoes National Park.*

**\$4,785 (per person, double occupancy)**

**\$\$895 single supplement (extremely limited)**

- Above includes transport from Uganda to Rwanda, 1x gorilla trek in Volcanoes National Park, 2 nights at luxury lodge/ camp (full board basis), gorilla permit and park fees, self-guided tour of the Dian Fossey Center in Virunga, visit to the Genocide Museum in Kigali,
- Does not include: Rwanda visas, gratuities, extra services, extra meals, beverages, yellow fever vaccination (proof required for those traveling between Uganda, Kenya and Rwanda).

Other customized pre/post trip extensions are available. Please contact Immersion Journeys at [info@immersionjourneys.com](mailto:info@immersionjourneys.com).

# TOUR RESERVATION FORM

To reserve a space, please complete and return this form with your deposit of \$1,650 per person (\$2,350 including Rwanda Extension) payable to Immersion Journeys. Please read the Participation Agreement on refund policies. You may also fill out an online reservation form. See [link](#) to the on-line reservation. Mail or e-mail the paper registration to: **455 Main Street, Suite 5M, New York, NY 10044/ E-mail: info@immersionjourneys.com**. We will not process your deposit until you are assigned a place on the tour. Please contact 917-686-2620 if you have any questions about the registration process.

Enclosed is my/our deposit check of \$ \_\_\_\_\_ (\$1,650 per person/ \$2,350 including Rwanda Extension)

Please charge my/our deposit of \$ \_\_\_\_\_ (\$1,650 per person/ \$2,350 including Rwanda Extension)

to my:  VISA  MasterCard  American Express Card #: \_\_\_\_\_

Expiration Date: \_\_\_\_\_ Security Code (4 digits for AMEX/ 3 digits for others) \_\_\_\_\_

Authorized Card Holder Signature: \_\_\_\_\_ Date: \_\_\_\_\_

**Please sign me/us up for the following optional extension:**

**3-night Kenya Sojourn**

**2-night Gorilla Trek in Rwanda**

**The balance of the trip is due on February 11, 2025. Payment by check or bank wire only. 3.5% processing fee for credit card payments will be added.**

## PASSENGER INFORMATION

**NAME 1 (as on passport):** \_\_\_\_\_

**NAME 2 (as on passport):** \_\_\_\_\_

Passport # \_\_\_\_\_ Nationality \_\_\_\_\_

Passport # \_\_\_\_\_ Nationality \_\_\_\_\_

Issue \_\_\_\_\_ (mm/dd/yy) Expiration \_\_\_\_\_ (mm/dd/yy)

Issue \_\_\_\_\_ (mm/dd/yy) Expiration \_\_\_\_\_ (mm/dd/yy)

Date of Birth \_\_\_\_\_ (mm/dd/yy) DU Affiliation \_\_\_\_\_

Date of Birth \_\_\_\_\_ (mm/dd/yy) DU Affiliation \_\_\_\_\_

Street Address \_\_\_\_\_ City \_\_\_\_\_

Street Address \_\_\_\_\_ City \_\_\_\_\_

State \_\_\_\_\_ ZIP \_\_\_\_\_

State \_\_\_\_\_ ZIP \_\_\_\_\_

Home Phone \_\_\_\_\_ Mobile \_\_\_\_\_

Home Phone \_\_\_\_\_ Mobile \_\_\_\_\_

Email (write clearly) \_\_\_\_\_

Email (write clearly) \_\_\_\_\_

I prefer single accommodations (*Limited to only 2 rooms and on first come basis ONLY.*)

I plan to room with \_\_\_\_\_  Double  Twin (*separate beds*)

I prefer to share accommodations (*if roommate is not available, I will pay the single rate*)

Emergency Phone # & Contact Name (during trip): \_\_\_\_\_

Please indicate any special needs (diet, health, mobility etc): \_\_\_\_\_

*By submitting my/our of deposit \$1,650 per person/ \$2,350 including Rwanda Extension. I am/we are registering for the 2025 Denver University **Gorillas in the Rift- An Adventure in Uganda** travel program, and have read and agreed to the terms & conditions. I understand that portions of this trip will be strenuous, includes unpaved and steep muddy paths. I also agree to be in good physical shape and can walk without a walking aid or wheelchair. I am/ we are also taking responsibility for purchasing our own **mandatory** supplemental travel insurance including medical evacuation in order to participate in this travel program.*

Signature \_\_\_\_\_ Date \_\_\_\_\_

Signature \_\_\_\_\_ Date \_\_\_\_\_



# PARTICIPANT'S AGREEMENT

*By signing our tour reservation form, or otherwise indicating your assent in writing, you agree to the terms and conditions set forth in this document. These terms and conditions apply to the Tour, the itinerary for the Tour and payment for the Tour.*

**1. INTRODUCTION:** These are the terms and conditions applicable to the tour packages provided by Immersion Journeys LLC, University of Denver, Engaging Journeys, Inc. (collectively "Immersion Journeys", "University of Denver", "Engaging Journeys" "we", "us" and "our"). The terms "client" "you" and "your" refer to each person who purchases and/or uses a tour package provided by Immersion Journeys.

**2. RESERVATIONS AND PAYMENTS:** A deposit of \$1,650 per person/ \$2,350 including Rwanda Extension per tour is required immediately to secure the gorilla permits, tour and services. **Gorilla and chimpanzee trekking permits are only purchased once the client has signed up for the trip and made the deposit in the above-mentioned amount. Permits are non-refundable and non-transferable once purchased. It is therefore important for clients to purchase trip cancellation insurance.**

The balance of your Tour cost is due 90 days prior to departure.

**3. TRAVEL INSURANCE:** Trip cancellation insurance is mandatory. In the event that you must cancel your participation in a travel Tour, trip cancellation insurance may be the only source of reimbursement. Trip cancellation insurance is available for comprehensive coverage of such expenses in conjunction with cancellation due to illness or accident, and damaged or lost luggage. In addition, medical evacuation coverage may be required as a condition of booking. **Please contact Sarah S. Doody, sarah.doody@du.edu, (904) 432-3141 for insurance information.**

**4. CANCELLATION AND REFUND POLICY:** Our cancellation charges are based on the stringent payment policies of our suppliers of local services and therefore represent a reasonable estimate of our loss. Cancellation charges are expressed as a dollar cost and/or a percentage of your total trip cost (excluding commercial airfare) and also depend on the day you cancel and the day of your scheduled departure from your home. Our cancellation charges are in addition to whatever the airline may charge you:

<b>Penalty</b>	<b>Number of Days of Advance Written Notice</b>
\$1,050	Before Sept 15, 2024
No refund on deposit	After September 15, 2024
50 percent (50%) of trip cost	Ninety-one (91) or more
One hundred percent (100%) of trip cost	Between eighty nine (89) and sixty (60) Less than sixty (60)

There is no refund for unused portions of a tour once it has commenced, and you are solely responsible for costs incurred by you due to missed, cancelled or delayed transportation. Your decision not to participate on the Tour due to State Department or Centers for Disease Control advisories or warnings, fear of travel, or for any other reason will be deemed a cancellation. If a flight or other delay for any reason prevents you from joining the Tour on the Tour start date, you will be considered a no-show. No refunds will be available, but you may join the Tour late if you wish.

Commercial airline tickets must be paid in full at the time of ticketing. Airline cancellation charges are set forth on the invoice.

**5. NOT INCLUDED:** Taxes; passport, visas and associated fees; personal expenses such as laundry, telephone calls and Internet access; accident/sickness, trip cancellation, and baggage insurance; gratuities to ship and hotel personnel; optional sightseeing excursions; baggage charges on aircraft; local departure air/airport tax(es); airfare and associated local taxes, airport facility and security taxes and federal inspection fees not listed as included in the travel Tour; transfers and baggage handling to/from airport/hotel/ship on day(s) of arrival and/or departure; any overnight on land due to flight schedule(s); meals, alcoholic or other beverages and all other services not specifically mentioned as included in the travel Tour.

**6. AIRFARE:** Airfare is subject to change and availability and, depending on the fare basis, Immersion Journeys.

**7. BAGGAGE:** Luggage allowance policies are set by the airlines and may change without notice. Baggage is at owner's risk throughout the trip. Airlines, buses, vans and other modes of transportation may all have weight and size restrictions on luggage. It is your responsibility to comply with all baggage restrictions.

**8. PRICE INCREASES:** Destination countries increase their VAT taxes from time to time. Some suppliers impose energy surcharges or other price increases. Prices are also subject to increase due to currency fluctuations. Any such increases will be applied to your total due at the time of final payment.

**9. PASSPORTS, VISAS, and OTHER ENTRY REQUIREMENTS:** International travel requires a passport valid 6 months beyond your intended return travel date. In most cases, you will also need to have multiple consecutive blank visa pages within your passport (the number varies depending on the destination(s)). Many destinations also require that visas be obtained prior to travel. If one parent or guardian plans to bring a minor child without the other parent or parents, some countries and airlines have strict documentation and permission requirements. Birth certificates may be required for children under 18. Some nations require proof of vaccinations for all travelers. Please speak with us if you are unsure about the visa requirements for your travel destination. You are solely responsible for complying with passport, visa, and other foreign entry requirements and vaccinations.

**10. RESPONSIBILITY AND ASSUMPTION OF RISK:** Immersion Journeys, its employees, shareholders, subsidiaries, affiliates, officers, directors, successors, and assigns (collectively "Immersion Journeys"), do not own or operate any entity which is to or does provide goods or services for your Tour including, for example, lodging facilities, airline, vessel, or other transportation companies, safari or guide services, local ground or safari operators, providers or organizers of optional excursions, food service or entertainment providers, etc. All such persons and entities are independent contractors. As a result, Immersion Journeys is not liable for any negligent or willful act, failure to act, financial failure or other defaults of any such person, entity, supplier or any other third party.

In addition and without limitation, Immersion Journeys is not responsible for any injury, financial or other loss, death, inconvenience, delay, or damage to person or property in connection with the provision of any goods or services whether resulting from, but not limited to, acts of God or force majeure, acts or orders of government, acts of war or civil unrest, insurrection or revolt, bites from or attacks by wild or domestic animals, insects or pests, strikes or other labor activities, criminal or terrorist activities of any kind or the threat thereof, sickness, illness, epidemics or the threat thereof, the lack of availability of or access to medical attention or the quality thereof, overbooking or downgrading of accommodations, mechanical or other failure of airplanes, vessels or other means of transportation, or for any failure of any transportation mechanism to arrive or depart timely or safely. Further, I release Immersion Journeys from its own negligence and assume all risk thereof.

We have no special or unique knowledge regarding the financial condition of the suppliers of services, unsafe conditions, health hazards, weather hazards, or climate extremes at locations to which you may travel. For useful information regarding your destination, we strongly recommend reviewing the destination-specific information at [www.travel.state.gov](http://www.travel.state.gov), and the Centers for Disease Control at [www.cdc.gov/travel](http://www.cdc.gov/travel).

If due to weather, flight schedules or other uncontrollable factors, you are required to spend an additional night(s), you will be responsible for your own hotel, transfers and meal costs. The right is reserved to decline to accept as a Tour participant, or remove from a Tour, without refund, any person Immersion Journeys judges to be incapable of meeting the rigors and requirements of participating in the activities, or who is abusive to other Tour participants, leaders or third parties, or who Immersion Journeys determines to detract from the enjoyment of the Tour by others. Specific room assignments are within the sole discretion of the lodge or hotel.

**11. CANCELLATIONS AND POSTPONEMENTS BY IMMERSION JOURNEYS:** Immersion Journeys reserves the right to change the itinerary, the lodges or hotels utilized or any Tour features at any time and for any reason, with or without notice, and Immersion Journeys shall not be liable for any loss of any kind as a result of any such changes. Immersion Journeys may cancel or postpone a Tour (or an option) for any reason whatsoever. Seasonal changes (for example, from low to high season) may result in higher prices. In any event, for cancellations (or postponements) based upon acts of God or force majeure, acts or orders of government, epidemics or the threat thereof, pandemics, terrorism or the threat thereof, strikes or labor disturbances, demonstrations, riots or civil unrest, criminal activity, supplier default or insolvency, or other similar circumstances, its sole obligation is to issue credits in the full amount of moneys paid to Immersion Journeys, but only to the extent its suppliers are crediting Immersion Journeys with those monies paid by Immersion Journeys to them. Under no circumstances is Immersion Journeys obligated to refund the cost of any purchased travel insurance. Immersion Journeys is not required to cancel any Tour for any reason including without limitation, United States Department of State, Centers for Disease Control, World Health Organization or other Warnings or Advisories of any kind. Immersion Journeys is not responsible for fees assessed by air carriers resulting from operational and/or itinerary changes, even if Immersion Journeys makes the flight arrangements or cancels the Tour. Immersion Journeys reserves the right to substitute lodges, hotels, vessels or attractions for those listed in the tour description if same is required by circumstances beyond its control or for the convenience or well-being of clients.

**12. OTHER TAXES AND FEES:** Some governments charge departure taxes and/or fees. These fees are the responsibility of each passenger traveling to the designated country and are not included unless stated.

**13. FORCE MAJEURE:** Immersion Journeys assumes no responsibility for any personal injury, property damage, financial or other loss, accident, delay, inconvenience, or irregularity which may be occasioned by reason of any matter beyond our control including but not limited to a delay or cancellation of a flight that causes you to miss all or any portion of the Tour, acts of God, acts or orders of government, epidemics, war, terrorist acts, riots, disaster, weather events, or strikes.

**14. INDEMNIFICATION:** You shall indemnify, defend and hold harmless Immersion Journeys, Denver University, Engaging Journeys, and its officers, employees, directors, suppliers and agents, in their individual capacities or otherwise, from and against any Losses arising out of: (i) your negligence; (ii) your failure to comply with applicable law; or (iii) your failure to comply with these terms conditions.

**15.** absolutely imperative that you have independent mobility. At times the walks will be strenuous. Any physical or mental condition that may require special medical attention or physical assistance (for example, the need for a wheelchair) must be reported in writing when you make your reservation. Further, Participants must be able to embark or disembark vans or motor coaches alone or with minimal assistance from your traveling companion and climb stairs and step over raised thresholds without assistance. Participants requiring assistance must travel with a companion who will be responsible for handling equipment. Please understand that the Americans with Disabilities Act does not apply outside the United States. **Please contact Sarah S. Doody, sarah.doody@du.edu, (904) 432-3141 for insurance information.**

**16. CONDUCT DURING TOUR:** You are also responsible for respecting the authority and following the directions of the tour guide and the laws of the countries in your itinerary. We may exclude you from participating in all or any part of the tour if, in our sole discretion, your condition or behavior renders you unfit for the tour or unfit for continuation once the tour has begun. Unfitness may include, without limitation, any behavior that, regardless of its cause, is inappropriate or offensive or interferes with the delivery of tour services, or may constitute a hazard or embarrassment. In such case, our liability shall be strictly limited to refund of the recoverable cost of any unused portion of the tour. Should you decide not to participate in certain parts of the tour or use certain goods included in the tour, no refunds will be made for those unused parts of the tour or goods.

**17. MEDICAL PROXY:** If you are unable to authorize your own medical attention and treatment, you authorize Immersion Journeys or its subcontractors or agents to authorize medical attention and treatment on your behalf. You agree to hold harmless and release Immersion Journeys from any liability for medical attention arranged or not arranged on your behalf. Immersion Journeys assumes no liability regarding provision of medical care or evacuation services.

**18. CHANGES:** Changes in this Agreement may be made only in writing, signed by an officer of Immersion Journeys.

**19. SUPPLEMENTAL RELEASE:** This Supplemental Release is supplemental to and not in limitation of the Agreement and Release from Liability, Assumption or Risk and Arbitration Agreement ("Release") I/we previously signed. Except as modified herein, that Release remains in full force and effect. I understand that Immersion Journeys, LLC. ("Immersion Journeys") does not own, operate, control or supervise any person or entity which provides hot air balloon trips or hot air balloon equipment and that it makes no representations whatsoever as to the adequacy or safety of any such person or entity or of any such equipment. In addition, I understand that Immersion Journeys is giving me information about this trip, or booking it only as a courtesy to me. I understand there are various risks of injury, inconvenience and death associated with hot air ballooning. These include, but are not limited to, crashes, uncontrollable wind currents which, among other things, could cause hard landings (dragging of the balloon which in turn could cause injury or death), the possibility of a fire as a result of a drag or crash, landing in an area different from that anticipated, defective equipment, etc. I assume all such risks and specifically release Immersion Journeys from any and all claims of negligence, gross negligence, breach of contract or any other claim with regard to my hot air ballooning trip. I further understand that medical aid may be unavailable during the course of my balloon safari, evacuation to any medical facility difficult and lengthy, and that any such facility (or medical personnel) may not be of the quality of facilities or medical personnel in the United States.

**20. BINDING ARBITRATION:** Any dispute concerning, relating or referring to this Agreement, the brochure or any other literature concerning the Tour, or the Tour itself, shall be resolved exclusively by binding arbitration pursuant to the Federal Arbitration Act, 9 U.S.C. Sections 1-16, either according to the then existing Commercial Rules of the American Arbitration Association (AAA) or pursuant to the Comprehensive Arbitration Rules & Procedures of the Judicial Arbitration and Mediation Services, Inc. (JAMS). Such proceedings will be governed by substantive (but not procedural) State of New York law and will take place in New York City, New York. The arbitrator and not any federal, state, or local court or agency shall have exclusive authority to resolve any dispute relating to the interpretation, applicability, enforceability, conscionability, or formation of this contract, including but not limited to any claim that all or any part of this contract is void or voidable. Please understand that by agreeing to these terms and conditions, the participant and Immersion Journeys are waiving the right to a trial by jury. Any arbitration commenced against Immersion Journeys must be on behalf of only the signatory to this Agreement and his or her immediate family members who travelled with signatory, such as a spouse or child. Under no circumstances can participant be part of a class or other joint action.

**By signing the Tour Registration form, you agree to the terms of this Terms and Conditions, Release of Liability, Assumption of Risk, Supplemental Release and Binding Arbitration Agreement. Your Agreement extends to any tour to which you may transfer. If you party includes a person under 18, then you represent that you are that person's parent or legal guardian.**