

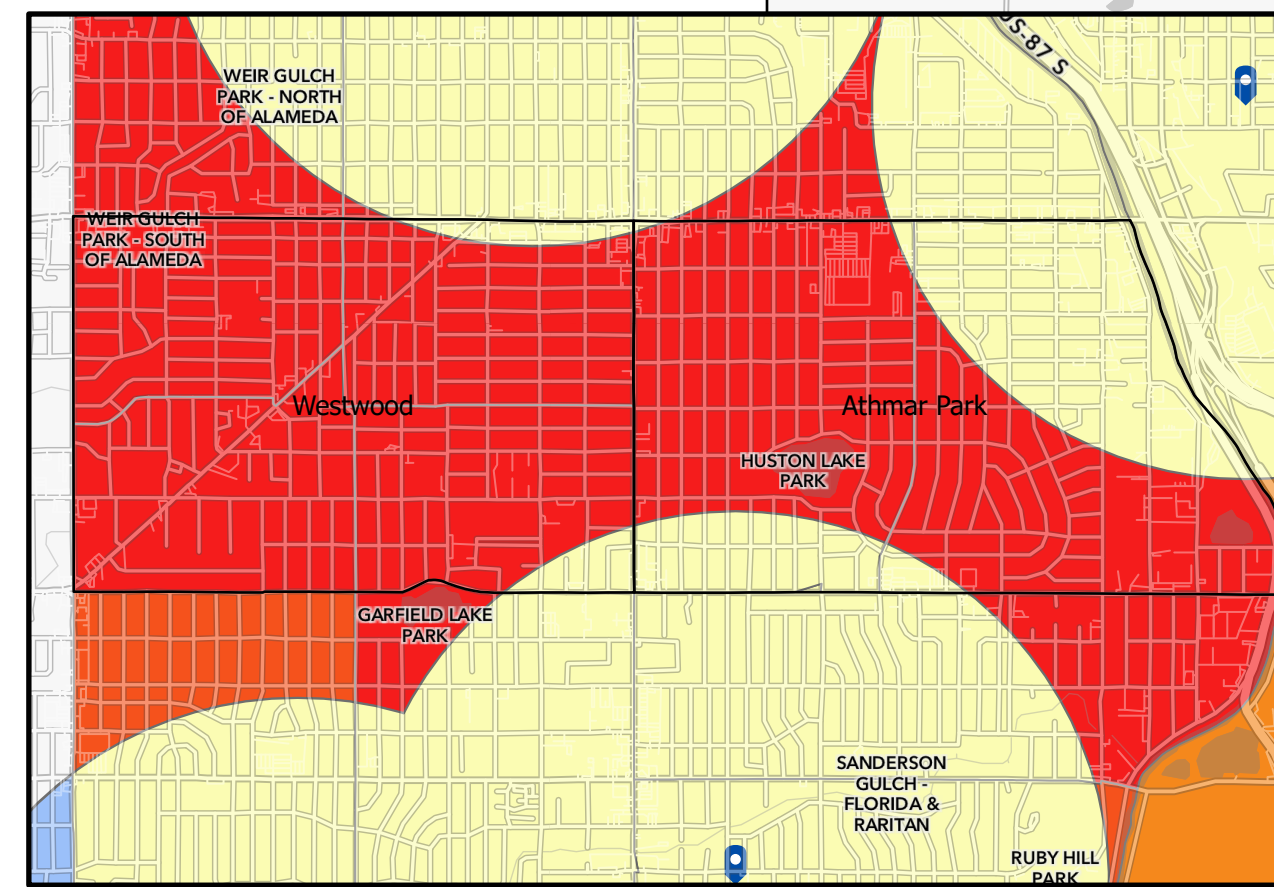
# 2020 ELECTION AND HISPANIC ACCESS

DENVER COUNTY, CO

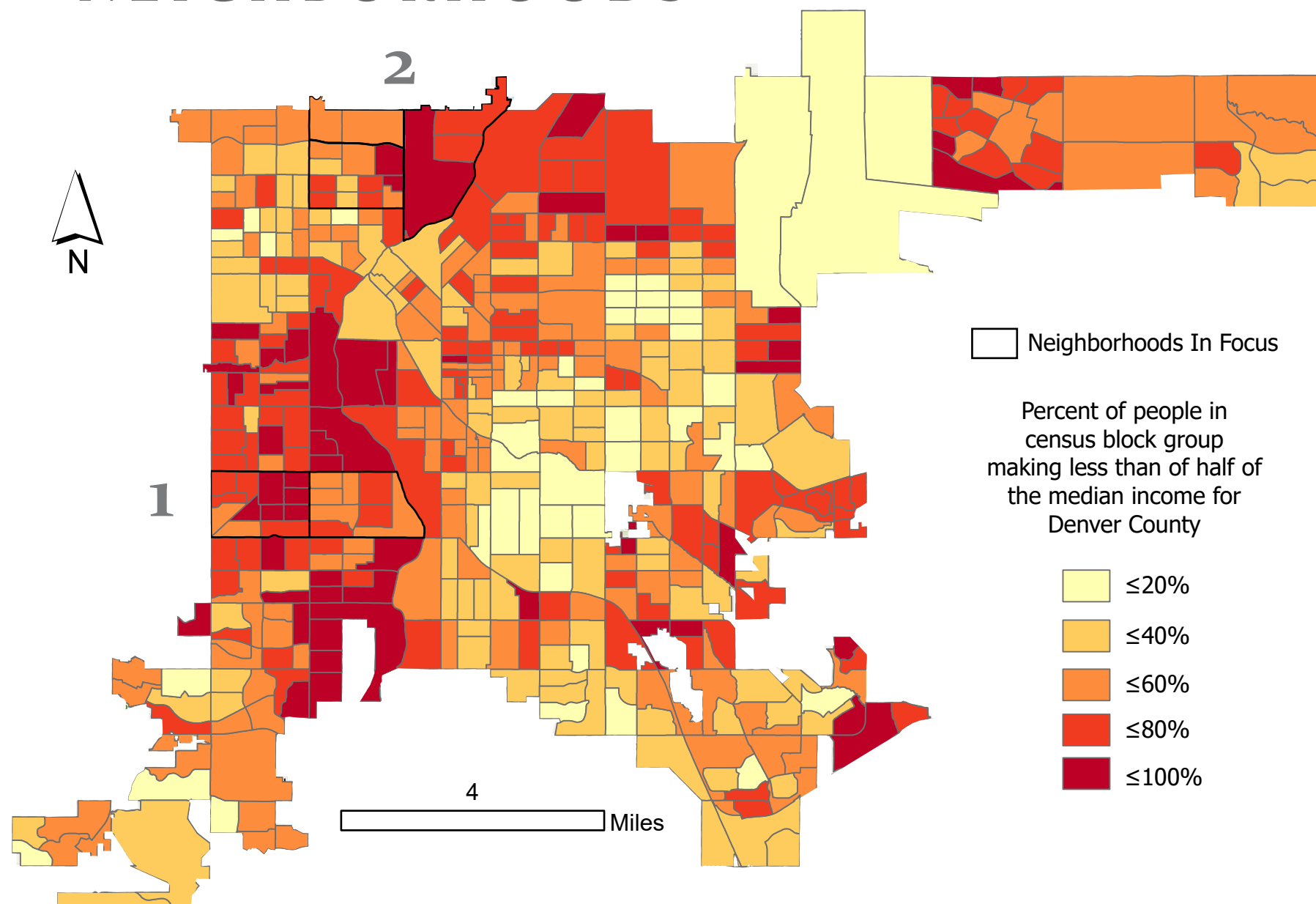
Due to the Covid19 Pandemic, dozens of in-person polling locations for the 2020 General Election were closed in Denver County, leaving only 34 in-person polling sites open on Election Day. Even with mail in voting, people were inevitably missed due to such cutbacks. This visualization works to highlight two low income and predominantly Hispanic communities in Denver that were disproportionately impacted due to the cutback. This reasoning is based on the United States Department of Agriculture-Economic Research Service's definition of a food desert: In the U.S., a food desert consists of a low-income census tract residing at least 0.5 miles (0.80 km) in urban areas (10 miles (16 km) in rural areas) from a grocery store. Access to voting should be treated using the same parameters, and will be for the case of this analysis. Concern is thus placed on the red and orange regions of the main map frame where access to polling locations is reduced for historically underprivileged low income Hispanic Communities. Concern is not placed on the underserved yellow regions of the map as they represent predominantly white middle to upper class neighborhoods where it is safe to say there are less socio-economic barriers to traveling a farther distance to vote.

## WESTWOOD/ATHMAR PARK 1

Westwood and Athmar Park are two neighborhoods in Denver in which the Hispanic/Latino percentage of total population is greater than 70% according to 2010 Census tact data. Additionally, since a large proportion of the population in these neighborhoods make less than half of the median annual income for Denver County, it can be classified as a low income census tract and can be considered a region where access to in-person polling was suppressed. This, intentional or unintentional, can be directly attributed to cutbacks in in-person polling sites.

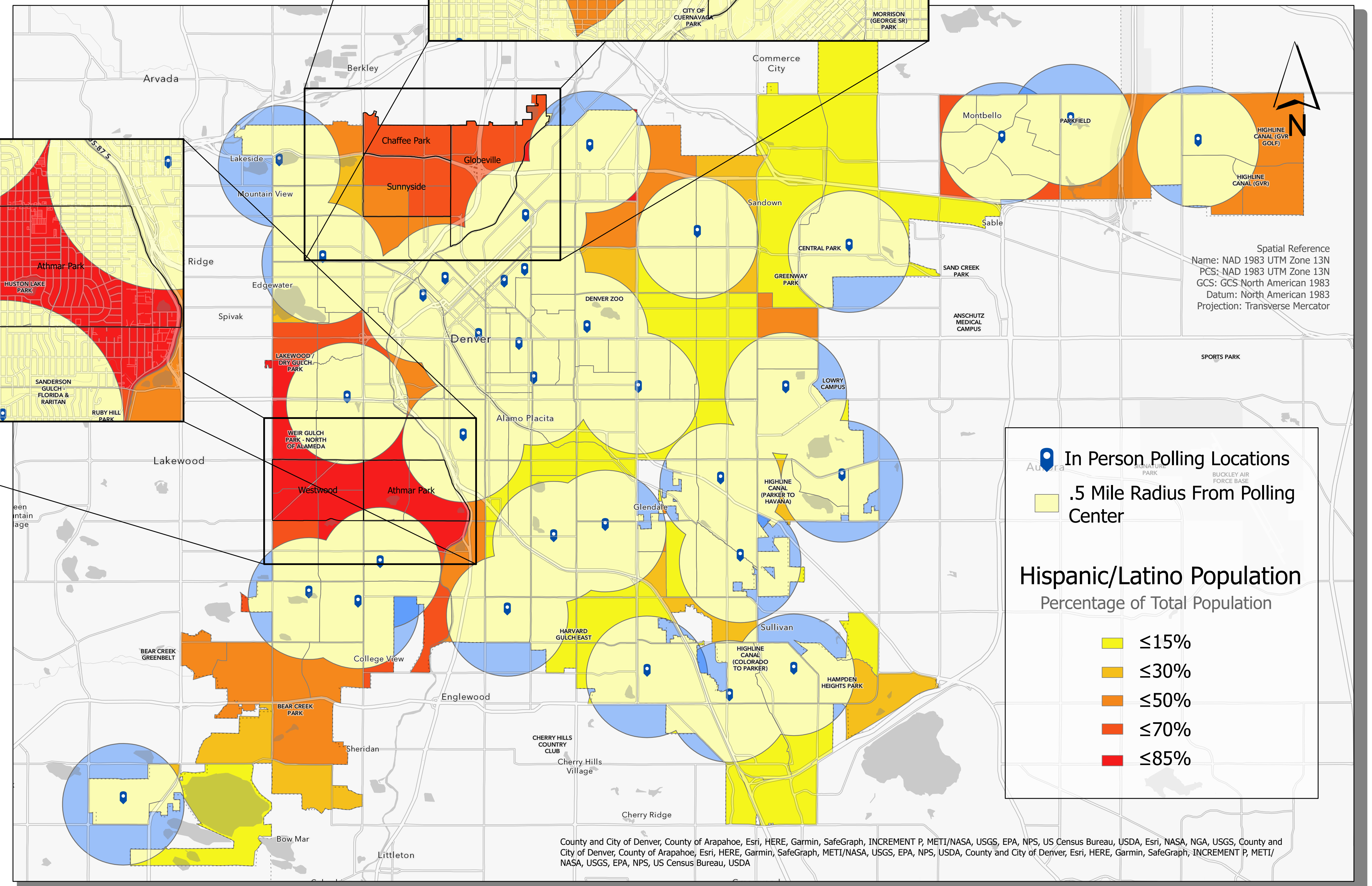
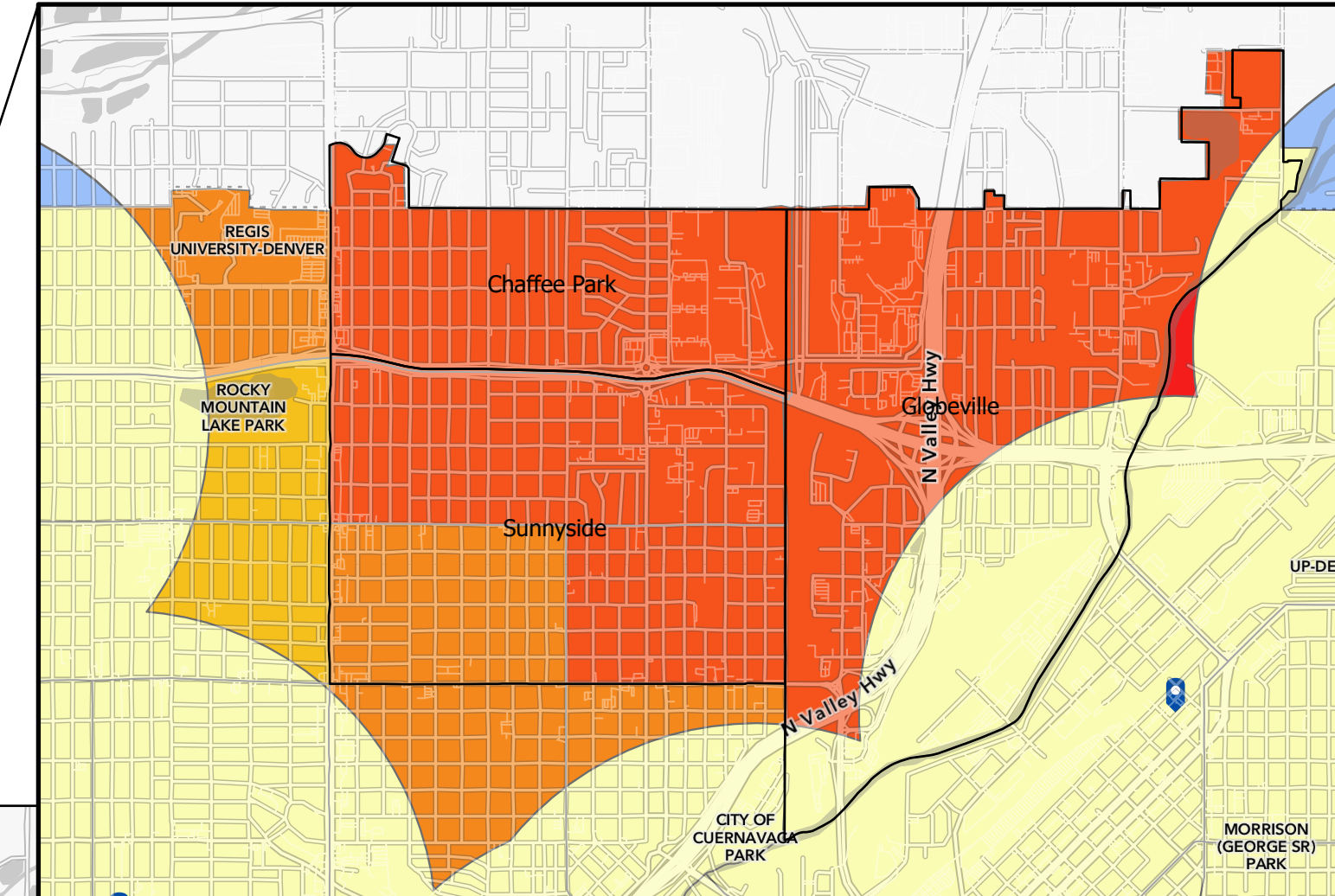


## LOW INCOME NEIGHBORHOODS 2



## 2 | GLOBEVILLE/CHAFFEE PARK/SUNNYSIDE

Globeville, Chaffee Park, and Sunnyside are a collection of three neighborhoods in North Denver in which the Hispanic/Latino percentage of total population is greater than 50%. These neighborhoods can similarly be considered low income communities referring to the income graphic in the lower left. Access to in person polling in these neighborhoods is again significantly reduced as seen in the main map frame as areas not within a .5 mile radius from a polling location.



**In Person Polling Locations**

**.5 Mile Radius From Polling Center**

**Hispanic/Latino Population Percentage of Total Population**

- ≤15%
- ≤30%
- ≤50%
- ≤70%
- ≤85%

County and City of Denver, County of Arapahoe, Esri, HERE, Garmin, SafeGraph, INCREMENT P, METI/NASA, USGS, EPA, NPS, US Census Bureau, USDA, Esri, NASA, NGA, USGS, County and City of Denver, County of Arapahoe, Esri, HERE, Garmin, SafeGraph, METI/NASA, USGS, EPA, NPS, USDA, County and City of Denver, Esri, HERE, Garmin, SafeGraph, INCREMENT P, METI/NASA, USGS, EPA, NPS, US Census Bureau, USDA

